

# SOUTHEAST ASIA CENTER FOR MARINE PROTECTED AREAS

## *Protecting Strings of Pearls*

### program information

#### Indonesia's marine diversity

581 reef-building coral species

1,650 known fish species in eastern Indonesia

12 whale species

18 dolphin species

6 sea turtle species

#### SEACMPA field offices

Sanur, Bali

Komodo National Park

Wakatobi National Park

Raja Ampat Islands, West Papua Province

#### SEACMPA partners

Indonesian government

World Conservation Union

International Coral Reef Action Network

UN Environment Programme

Network of Aquaculture Centres in Asia-Pacific

UNESCO

USAID

National and international NGOs

Local Communities

Private Sector

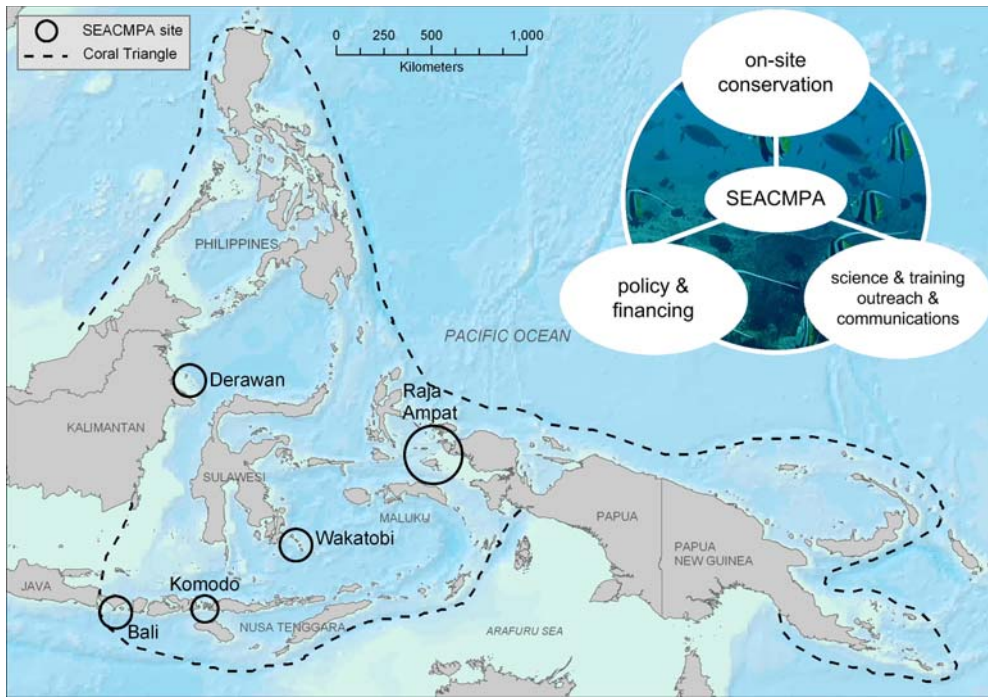


Healthy coral reef ©Kal Muller

Established in 1995, The Nature Conservancy's Southeast Asia Center for Marine Protected Areas (SEACMPA) in Bali is uniquely positioned to address threats to the world's most biodiverse seas and help people reap their benefits sustainably.

SEACMPA focuses on the eastern Indonesian part of the Coral Triangle, an area in Southeast Asia that harbors the most diverse reef systems on Earth. Indonesia has nearly 33,000 square miles of coral reefs and 16,000 square miles of mangroves. The country's waters are home to a third of the world's total corals and a quarter of its fish species.

But Indonesia's economic and population growth are straining its extraordinary marine resources beyond sustainable levels. Killer threats are destructive fishing practices and overfishing, coupled with global threats such as large-scale bleaching. To address these threats, SEACMPA develops and supports a network of Marine Protected Areas applying a blend of science, business expertise, local knowledge, and conservation principles. These networks are designed using The Conservancy's science-based selection criteria, based on the principles of resilience, redundancy and representation.



## Establishing and Supporting Marine Protected Areas

Marine Protected Areas (MPAs) are powerful tools for preserving species and ecosystems and replenishing fisheries. They include natural areas of high biodiversity value where human use, such as fishing, is restricted to safeguard their function as a source of replenishment for sustainable fisheries. However, MPAs can only be effective if they are properly planned and managed.

Unfortunately, many of Indonesia's existing MPAs lack management capacity and expertise on marine park planning. SEACMPA seeks to address these needs through on-site conservation management, policy and financing support, communications and outreach support, and offering training and scientific advice.

## Making a Difference where it matters most

SEACMPA supports on-the-ground conservation at some of Indonesia's most important marine sites:

**Komodo National Park**—home to 1,000 species of fish, 260 species of

reef-building corals, dolphins, whales, sea turtles, and the famous Komodo dragon—where we are working in close partnership with local communities and the Park Authority;

**Wakatobi National Park**, the largest marine national park in Indonesia, is one of the highest priorities for marine conservation and the logical centerpiece for a network of mutually replenishing MPAs in the Banda-Flores Seas;

**The Raja Ampat Islands**, where early surveys recorded the highest coral and fish diversities found on Earth, and local communities are eager to protect their marine resources from growing threats by establishing MPAs;

**The Derawan Islands**, famous for its green turtle nesting beaches and unique saltwater lakes, but also featuring mega-diverse coral reef systems, and

**Leverage Sites** throughout Indonesia and the Asia-Pacific region, including the Banda Archipelago, Flores and Alor, Bali, and others, where SEACMPA is working to influence and support conservation and marine management.

## Innovative Conservation Policies and Financing

SEACMPA works closely with local and international partners to develop marine conservation policies. This includes support for collaborative management strategies for protected areas, participation in a national MPA Taskforce; developing business plans that create sustainable sources of funds for conservation management, and chairing the Southeast Asia a marine working group of IUCN's World Commission for Protected Areas.

## Enhancing Knowledge and Skills

To build the conservation skills of Indonesia's marine managers and government agencies, SEACMPA conducts a variety of training and outreach activities, including MPA management training, field monitoring courses, and field exchanges between national parks. To involve local communities in its conservation program, SEACMPA also offers training in environmentally sustainable alternatives to destructive fishing, such as seaweed farming, offshore fishing, weaving, wood carving, and SCUBA training for local tour guides. Furthermore, SEACMPA is implementing a community-based grouper culture project to help transforming the trade in live reef fish, responsible for depletion of grouper populations throughout Southeast Asia, into a sustainable, culture-based industry.

### contact information

The Nature Conservancy  
Southeast Asia Center for  
Marine Protected Areas  
Jalan Pengembak No. 2  
Sanur, Bali 80228  
Indonesia  
tel +62.361.287272 fax +62.361.270.737  
tncseacmpa@attglobal.net  
www.komodonationalpark.org  
www.iucn.org/themes/wcpa/biome/  
marine/seasia/seasia.html  
nature.org